

UHF TV log periodic 468 - 860MHz

DESCRIPTION

A rugged, high power directional antenna for UHF TV radio broadcast and relay. Using a log-periodic dipole array design, the antenna offers a stable pattern over the full UHF analogue / digital TV band.

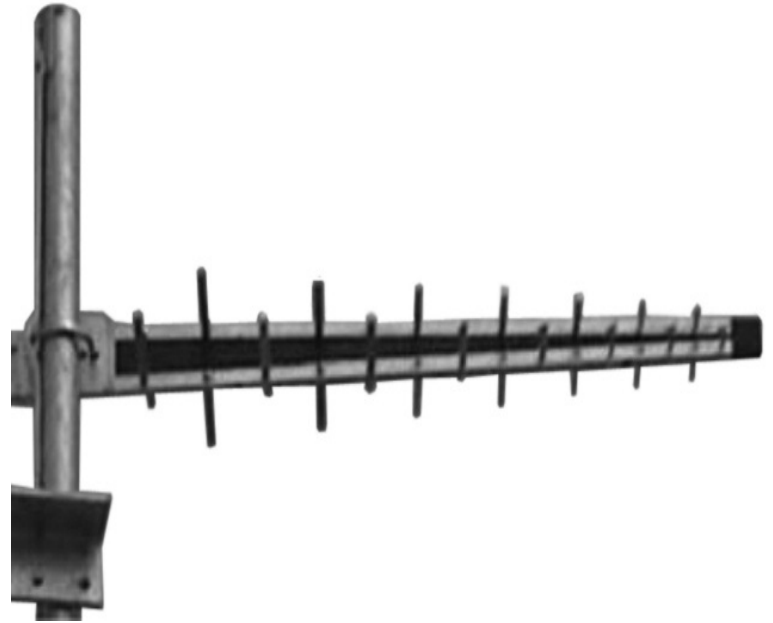
- Former Jaybeam brand product.

SPECIFICATIONS

Electrical	
Frequency	468 - 860 MHz
Max. Input Power	250 W
Polarisation	Linear (Vertical or Horizontal)
3 dB Beamwidth, H-Plane	70 °
Impedance	50 Ω
Gain	7.9 dBd (10.1 dBi)
VSWR	< 1.3:1
Antistatic Protection	All metal parts DC-grounded (Connector shows a DC-short)
In iBwave	Yes
Mechanical	
Connection(s)	N(f)
Materials	Aluminium Alloy
Dimensions	1210 x 320 mm / 47.64 x 12.60 in.
Weight	3.5 kg / 7.72 lb
Mounting	Integral mounting clamp to fit 38 - 50 mm dia. pipe

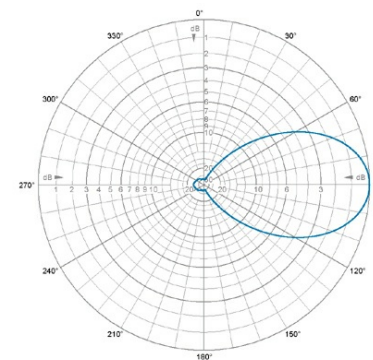
ORDERING

Model	Product No.	Description	Frequency
UHF TV log periodic 468 - 860MHz	LPU/R-7/16	7/16(f) termination	468 - 860 MHz
UHF TV log periodic 468 - 860MHz	LPU/R-N	N(f) termination	468 - 860 MHz



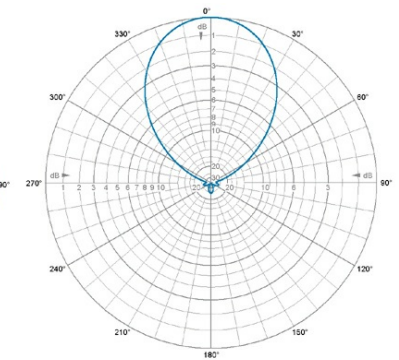
DIAGRAM

RADIATION PATTERNS



E-Plane | 664 MHz

RADIATION PATTERNS



H-Plane | 664 MHz

