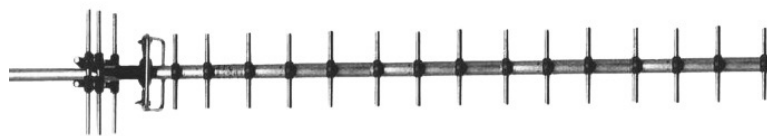


18 element par.Yagi 685 - 855 MHz

DESCRIPTION

- > An 18-Element Yagi antenna of well proven design, available for UHF TV bands.
- > Jaybeam's famous 'Parabeam' slot radiator is used giving a performance advantage over similar sized antennas.
- > Its light but strong construction makes it easily deployable.
- > Former Jaybeam brand product.



SPECIFICATIONS

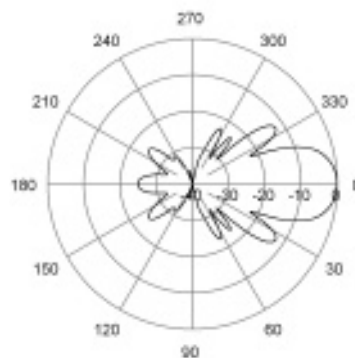
Electrical	
Model	7356825
Frequency	685-855 MHz (Channels 47-68)
Max. Input Power	150 W
Polarisation	Linear (Vertical or Horizontal)
3 dB Beamwidth, E-Plane	23 °
3 dB Beamwidth, H-Plane	25 °
Impedance	50 Ω
Gain	14.4 dBd (16.5 dBi)
VSWR	< 2.0:1
Front-To-Back Ratio	20 dB typ.
Antistatic Protection	All metal parts DC-grounded (Connector shows a DC-short)

Mechanical	
Connection(s)	N(f) on 3m RG213/U cable
Materials	Boom, 25 mm dia., aluminium Elements, 10 mm dia., aluminium balun, 'Parabeam' slot radiator
Length	Approx. 2380 mm / 93.70 in.
Wind Load	196 N (160 km/h)
Weight	Approx. 4.5 kg / 9.92 lb.
Mounting Bracket	0900174/00 + 3202078/68 (Ordered Separately)

ORDERING

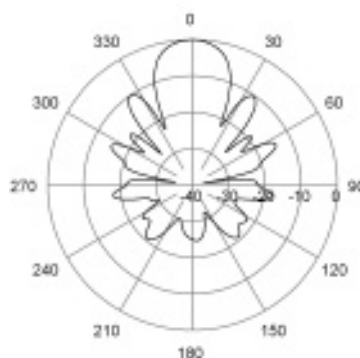
Model	Product No.	Frequency
18 element par.Yagi	7356825	685 - 855 MHz
Accessories		
Increasing sleeve 1"-1-29/32"	0900174/00	
Fixed norstel / coupler clamp (cross clamp)	3202078/68	

RADIATION PATTERNS



E-Plane | 770 MHz

RADIATION PATTERNS



H-Plane | 770 MHz

